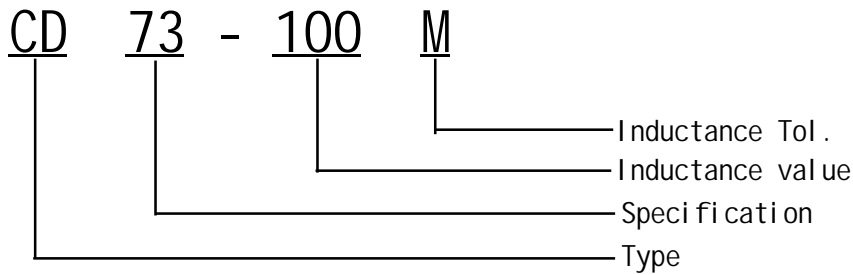


# SMD Power Inductors CD73 Series

## 贴片功率电感CD73 系列



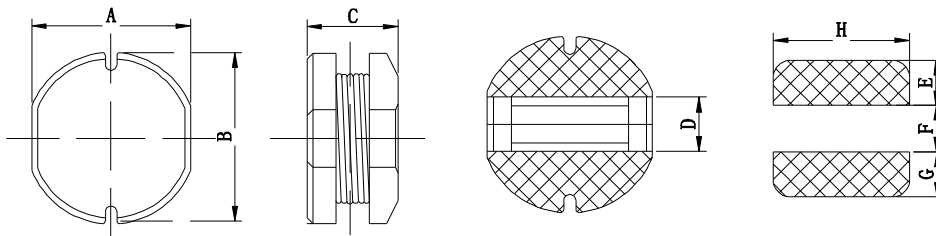
### I. Ordering Code:



※ Inductance Tol. J:  $\pm 5\%$ , K:  $\pm 10\%$ , M:  $\pm 20\%$ , N:  $\pm 30\%$ .

※ Inductance value. 1R0: 1.0uH, 100: 10uH, 101: 100uH, 102: 1000uH.

### II. Configuration & Dimensions: (mm)



Size	A	B	C(max)	D	E	F	G	H
CD73	7.00 $\pm$ 0.30	7.80 $\pm$ 0.30	3.80	2.50	3.00	2.00	3.00	7.50

### III. Materials :

- a. Core: Ferrite DR core
- b. Wire: Enamelled copper wire
- c. Terminal: Cu/Sn
- d. Encapsulate: Epoxy novolac molding compound
- e. Remark: Products comply with RoHS' requirements

### IV. General Specification :

- a. Storage temp. : -40 $^{\circ}$ C ---- +125 $^{\circ}$ C
- b. Operating : -40 $^{\circ}$ C ---- +105 $^{\circ}$ C
- c. Temp. rise : 40 $^{\circ}$ C Max. at rated current.



Specifications subject to change without notice. Please check our website for latest information. Released: 2012/12/18

Danxingda Shenzhen.China Tel: 0755-61303918 Fax: 0755-83462232 Web: <http://www.mydxd.com> E-mail: [lareina@mydxd.com](mailto:lareina@mydxd.com)



## CD73 Series

Part No.	L (uH)	Test Freq .(KHZ)	Tolerance	D.C.R( $\Omega$ )	Rated Current
				MAX	(A)
CD73-1R2M	1.20	100K/0.25V	$\pm 30\%$	9.10m	5.60
CD73-2R2M	2.20	100K/0.25V	$\pm 30\%$	14.3m	4.00
CD73-2R7M	2.70	100K/0.25V	$\pm 30\%$	16.9m	3.50
CD73-3R3M	3.30	100K/0.25V	$\pm 30\%$	19.5m	3.00
CD73-3R9M	3.90	100K/0.25V	$\pm 30\%$	22.1m	2.50
CD73-4R7M	4.7	100K/0.25V	$\pm 20\%$	26.0m	2.00
CD73-5R6M	5.6	100K/0.25V	$\pm 20\%$	31.2m	1.80
CD73-6R8M	6.8	100K/0.25V	$\pm 20\%$	39.0m	1.70
CD73-8R2M	8.2	100K/0.25V	$\pm 20\%$	45.5m	1.55
CD73-100M	10.0	1.0K/0.25V	$\pm 20\%$	55.9m	1.43
CD73-120M	12.0	1.0K/0.25V	$\pm 20\%$	59.8m	1.38
CD73-150M	15.0	1.0K/0.25V	$\pm 20\%$	72.8m	1.23
CD73-180M	18.0	1.0K/0.25V	$\pm 20\%$	85.8m	1.10
CD73-220M	22.0	1.0K/0.25V	$\pm 20\%$	0.117	1.06
CD73-270M	27.0	1.0K/0.25V	$\pm 20\%$	0.130	0.930
CD73-330M	33.0	1.0K/0.25V	$\pm 20\%$	0.163	0.820
CD73-390M	39.0	1.0K/0.25V	$\pm 20\%$	0.192	0.720
CD73-470M	47.0	1.0K/0.25V	$\pm 20\%$	0.215	0.680
CD73-560M	56.0	1.0K/0.25V	$\pm 20\%$	0.247	0.620
CD73-680M	68.0	1.0K/0.25V	$\pm 20\%$	0.312	0.580
CD73-820M	82.0	1.0K/0.25V	$\pm 20\%$	0.338	0.530
CD73-101M	100.0	1.0K/0.25V	$\pm 20\%$	0.481	0.500
CD73-121M	120.0	1.0K/0.25V	$\pm 20\%$	0.520	0.480
CD73-151M	150.0	1.0K/0.25V	$\pm 20\%$	0.663	0.410
CD73-181M	180.0	1.0K/0.25V	$\pm 20\%$	0.715	0.360
CD73-221K	220.0	1.0K/0.25V	$\pm 10\%$	0.936	0.300
CD73-271K	270.0	1.0K/0.25V	$\pm 10\%$	1.10	0.280
CD73-331K	330.0	1.0K/0.25V	$\pm 10\%$	1.30	0.270
CD73-391K	390.0	1.0K/0.25V	$\pm 10\%$	1.60	0.240
CD73-471K	470.0	1.0K/0.25V	$\pm 10\%$	1.86	0.220
CD73-561K	560.0	1.0K/0.25V	$\pm 10\%$	2.34	0.200
CD73-681K	680.0	1.0K/0.25V	$\pm 10\%$	2.60	0.190

### VI. 额定电流 Reted Current :

电感值下降至初始值的10%或温度上升至40°C时的直流电流值中的最小值。(环境温度20°C) This indicates the value of current when the inductance is 10% lower than its initial value at D.C. superposition or D.C. current when T=40°C whichever is lower. (Ta=20°C)

### VII. 无铅制品 Lead-free

### VIII. 测试仪器 Test instrument : HP4284A, 502BC, CH1062A.

